

Roscommon CCC Weekly Bulletin for ELC and SAC services in County Roscommon



In this edition

1. Roscommon CCC updates
2. Tip of the week
3. New supports for childcare providers weekend/bank holiday
4. Roscommon CCC Resources
5. DCEDIY Important notice/deadlines
6. First 5
7. PIP updates & Hive updates
8. Barnardo's Library service
9. Tusla updates

Supporting parents
& families & the
ELC and SAC sector



Roscommon County Childcare Committee Details

If you have any questions or queries, contact a member of the team

Martina Towey, Administrator, 094-9622540 Mobile 087- 0629894

martina.towey@roscommonchildcare.ie

Sinead McQuaid, Childcare Development officer 094 9622540 Mob: 087 7744406

sinead.mcquaid@roscommonchildcare.ie

Carmel Dunne, childcare Development Officer, 094 9622540 Mob: 087 7744405

carmel.dunne@roscommonchildcare.ie

Aine Mannion, Childcare Development Officer 094 9622540 Mob: 087 7744404

aine.mannion@roscommonchildcare.ie

Irene Cafferky, County coordinator/Manager, 094 9622540 Mob: 086 6039606

Irene.cafferky@roscommonchildcare.ie

Website: www.roscommonchildcare.ie

Facebook: www.facebook.com/roscommonchildcare/



An Roinn Leanaí, Comhionannais,
Míchumais, Lánpháirtíochta agus Oige
Department of Children, Equality,
Disability, Integration and Youth



An Roinn Leanaí, Comhionannais,
Míchumais, Lánpháirtíochta agus Oige
Department of Children, Equality,
Disability, Integration and Youth



Roscommon CCC Weekly Bulletin for ELC and SAC services in County Roscommon



Reminder: **Force majeure will no longer be approved for services claiming no demand from 8th March 2021.**

New supports available to childcare providers, weekend, and Bank Holidays**Covid Case Support Helpline**

There are two helplines available to services who have a suspected or confirmed case of Covid-19 in their service.

The HSE have a helpline to advise service providers if they have been informed of a Covid-19 case in a child or a staff member. The number is 01 511 9777 It is open Monday – Friday 8.30 – 4.30 and 10 – 4.30 Saturdays, Sundays and Bank Holidays.

For those services who need support on engaging with the relevant authorities due to a suspected or confirmed case of Covid-19, there is an **out of hours** helpline. The number is 1800 940 341. The service will be available Saturday, Sunday and Bank Holidays from 10.00 – 13.00 and 13.30 – 16.00.



An Roinn Leanaí, Comhionannais,
Míchumais, Lánpháirtíochta agus Óige
Department of Children, Equality,
Disability, Integration and Youth

National Covid-19 Support Helpline for ELC and SAC providers

If you are a childcare provider and/or a childminder and need out of hours support in relation to a suspected or confirmed case of Covid-19 in your childcare service please contact

1800 940341

This support line is available only
Saturdays/Sundays and Bank holidays
from 10am - 1pm and 1.30pm - 4pm



Coronavirus
COVID-19
Public Health
Advice



An Roinn Leanaí, Comhionannais,
Míchumais, Lánpháirtíochta agus Óige
Department of Children, Equality,
Disability, Integration and Youth



government supporting communities

Roscommon CCC Weekly Bulletin for ELC and SAC services in County Roscommon**Open or closed.**

Roscommon CCC are required to report to the DCEDIY those services that are open/closed.

We will continue with our weekly phone call and be emailing you once a week to confirm that your status, including your occupancy rate hasn't changed. We need to be able to assure the DCEDIY that we have the most up-to-date information. Roscommon CCC are very grateful for your response and engagement to date.

Looking for Early Learning and
Care/School Aged Childcare/
Childminding/Parent and Toddler
Group Resources?

Check out Roscommon CCC website
www.roscommonchildcare.ie

Roscommon CCC updates

In this week's bulletin you will find the most recent announcements from DCYA and the PIP Portal.

Please note the information in these bulletins is based on official communications from DCYA and Pobal as well as notices on PIP. However, information is subject to change from week to week so please check our most recent bulletin for the most up to date information. Don't forget this bulletin should not replace checking PIP - it is merely a reminder of important deadlines and information.

**Child Protection Briefing**

We are now offering 2 separate Briefing Sessions open to all staff in our childcare services in County Roscommon however, as this is **National Training delivered by the National Tusla Children First Information and Advice Officers** the places are limited and will therefore be allocated on a first come first served basis. Staff can avail of one or both of these training sessions.

The Session Outlines are as follows:

Online Briefing Session – Mandated Person: Date: Monday 15th March Time: 10.30am – 12.30am
Trainer: Edwina Flavin Tusla

This session is aimed at **mandated persons in Early Learning and Care services**. The session explains the roles and responsibilities of mandated persons under the Children First Act, 2015, including understanding legal obligations and making reports to Tusla. Priority on this session should be given to mandated persons who may be new to their role or who require a refresher on the roles and responsibilities of mandated persons. **This session is not open to staff who only work as School Age Childcare practitioners as they are not mandated persons under the Children First Act 2015.**



Roscommon CCC Weekly Bulletin for ELC and SAC services in County Roscommon

Online Briefing Session – Designated Liaison Person (DLP): Date: Monday 22nd March Time: 10.30am – 12.30pm Trainer: Edwina Flavin Tusla This is open to all, including school age childcare staff who are DLPs

This session is aimed at those in the DLP or Deputy DLP roles in ELC and SAC services. This session will explore the roles and responsibilities of the DLP/DDLP. **THIS IS NOT DLP TRAINING. IT IS A BRIEFING SESSION ON THE RESPONSIBILITIES ASSOCIATED WITH THE ROLE OF DLP/DDLP.**

This session is particularly aimed at those who may be new to the DLP or DDLP role and have been unable to access training since their appointment.

All participants on these sessions must have completed the Tusla Always Children First eLearning programme.

To book a place please email Irene, Roscommon CCC child safe guarding trainer at irene.cafferky@roscommonchildcare.ie

For booking we will need **your name**, the **service you work in**, **the email address you wish the training invitation to be sent to** and **state the training you are booking for** (you can book for both sessions) and **you must confirm that you have completed the Tusla Always Children First e learning programme.**

School Age Childcare Guidelines

Roscommon CCC will be distributing a copy of the SAC guidelines to SAC services both stand alone and combined in the coming weeks.

**Ask The Team**

● ECCE Minimum number exemption

An ELC Service provider must have a minimum enrolment number of eight ECCE-eligible children per session.

Exceptions to the minimum enrolment number may be granted in some circumstances.

Applications must be submitted to your local City/County Childcare Committee.

To download the ECCE minimum number exemption form go to:

1. Early Years hive
2. Resources
3. Downloads
4. ECCE checklists



An Roinn Leanaí, Comhionannais,
Míchumais, Lánpháirtíochta agus Oige
Department of Children, Equality,
Disability, Integration and Youth



An Roinn Leanaí, Comhionannais,
Míchumais, Lánpháirtíochta agus Oige
Department of Children, Equality,
Disability, Integration and Youth



Roscommon CCC Weekly Bulletin for ELC and SAC services in County Roscommon

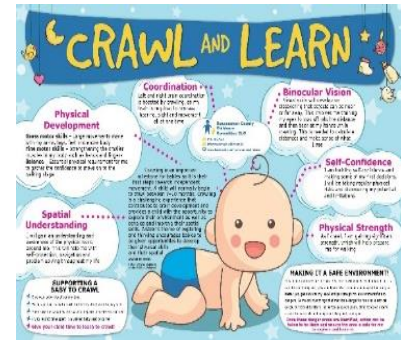
Childminders are you aware of the Childcare Services Relief

For more information on the Childcare Services Relief please click here:

<https://www.revenue.ie/en/tax-professionals/tdm/income-tax-capital-gains-tax-corporation-tax/part-07/07-01-29.pdf>

**Service Providers: Will you please inform
Roscommon CCC if your service closes for any reason.**

**Contact us on 094 9622540 or e mail
info@roscommonchildcare.ie**



Roscommon County Childcare Committees remit as local agent on behalf of the Department of Children Disability, Equality, Integration and Youth (DCEDIY) in County Roscommon is to assist parents and families with their childcare choices and support them in accessing the national childcare schemes. Our team are available to meet or talk with you regarding childcare subsidies and accessing the current childcare subsidies.

Roscommon County Childcare Committee, Knock Road, Castlerea, Co. Roscommon

Telephone: 0949622540

Email: info@roscommonchildcare.ie

Website: www.roscommonchildcare.ie



In the current climate, cleaning is very important to stop the spread of virus'. Bel is an information poster on the natural cleaning agents that could be used in ELC and SAC childcare settings.



Roscommon CCC Weekly Bulletin for ELC and SAC services in County Roscommon

Bug Hotel Activity:

These easy to make, sustainable habitats are ideal for inviting insects to your garden. You will have ladybirds, spiders, bees and many more insects, this is an exciting way to introduce the ideas of sustainability and biodiversity to young children, encouraging them to be more aware of the creatures we share our planet with.



Roscommon CCC Resources

Roscommon CCC has uploaded a variety of useful resources for services and parents on our resource page [on our website](#).

Recent resources include:

- Roscommon CCC Crawl and Learn poster. Click on the poster to download for free. This would be a good resource to parents and service providers.
 - Roscommon CCC [policies and procedures guidelines](#) and many others.
- [Think abouts on re-opening your Early Learning and Care and School Aged Childcare Service](#)
[Support from Roscommon County Childcare Committee CLG](#)

Roscommon CCC Weekly Bulletin for ELC and SAC services in County Roscommon

An Roinn Leanaí, Comhionannais,
Míchumais, Lánpháirtíochta agus Óige
Department of Children, Equality,
Disability, Integration and Youth

**DCEDIY updates**

Please find attached and below some important updates for you as owner/manager and your voluntary management committees (if community services)



School age childcare service registration with Tusla 15th April 2021 See below for further information.

Launch of COVID-19 Impact support -opens Monday 1st March.

Please click the [link](#) announcing the launch of the COVID-19 Impact support, a strand of sustainability funding for which applications opened on Monday 1st March. Information about eligibility criteria and how to apply are contained within.

Payment Schedule

Eligible COSP services who have accepted the terms and condition of funding by COB on Monday, 15th March, will be paid on Friday, 19th March. Thereafter payments will be issued on a weekly basis.

**FAQs relating to the gradual lifting of restrictions for ELC and SAC.**

The new [FAQ document](#) covering the period March 8th to March 29th. These FAQs reflect the announcement made by the Minister on 23rd April with regard to the gradual lifting of restrictions on delivery of early learning and childcare services from 8th March. Also attached.

School age childcare service registration with Tusla

You will have received correspondence from Tusla regarding the registration of school age childcare services. Tusla are asking that all services that have not yet completed the registration of their school age services do so as soon as possible. The final deadline for registration is 15 April.

Tusla are suggesting that you complete your submission as soon as possible, so that it can be reviewed and any amendments to documents made in plenty of time for the deadline in April. You have to upload all of the required documents in order to submit your application.

The submission checklist can be found on the Tusla website here:

https://www.tusla.ie/uploads/content/School_Age_Childcare_Policies_Registration_Checklist_version_1.02.pdf

If you have any queries or need assistance you can contact the school age registration team on:

- sac.registration@tusla.ie
- 061 461715

Roscommon CCC are available to help too on 094 9622540 or email info@roscommonchildcare.ie



An Roinn Leanaí, Comhionannais,
Míchumais, Lánpháirtíochta agus Óige
Department of Children, Equality,
Disability, Integration and Youth



government supporting communities

Roscommon CCC Weekly Bulletin for ELC and SAC services in County Roscommon



Compliance Checks-commenced 22nd February 2021

Compliance checking of the TWSCS programme 2020 commenced on 22nd February. These will be remote checks and will be announced in advance.

Those services that have already undergone a TWSCS check will not be rechecked. Please click [here](#) for further information

FAQs for Parents of Children in Early Learning and Care and School Age Childcare Services (07 January)



Please click [here](#) for further information



The Department of Children, Equality, Diversity, Inclusion and Youth Affairs (DCEDIY) is relaunching its Supporting Children campaign. The campaign will run on radio and social media for the next 6 weeks. Useful information about the supports available to vulnerable children during the campaign is available here: [Supporting Children](#).

National Parents Council consultation with parents

This last year of school closures has had a significant impact on all of our children, but the experience has not been the same for everyone

Monday, 15th March 7:30-9pm (online)

We need to hear from you the parents!

What has been the impact of a year of school closures on your child?

What supports do you think they will need to make up for the loss?

As part of our new regional structure this assembly will ask the views of the West Region. Be sure to keep an eye out for your region!

West

To register simply click on the link below

https://www.surveymonkey.com/r/NPC_Regional_Assemblies_March2021



Parents support on First 5.

The Let's get Ready website has lots of resources for parents preparing their children to return.



Roscommon CCC Weekly Bulletin for ELC and SAC services in County Roscommon

to preschool/school. Click [here](#) for further information. Supporting your child's transition to primary school: click [here](#) for further information. Teaching new skills to children: Click [here](#) for further information.

Preschool Hub

Preschool Hub - Please find attached the link to the **new** Pre-school at Home hub page that includes the Playing at Home information sheets.

<https://first5.gov.ie/parents/pre-school-at-home/exploring-thinking>.

Roscommon County Childcare Committee is working in collaboration with Dublin City University to facilitate a final year student placement. Emily, our student, is working towards supporting Parent and Toddler groups interested in using Zoom as an online platform to continue their sessions. Weekly activities for groups will be posted on Roscommon CCC Facebook page <https://www.facebook.com/roscommonchildcare> and feedback from these activities will inform the zoom session Emily plans to hold with Parent and Toddler Groups. We would encourage groups interested in getting involved to contact Roscommon CCC via email to aine.mannion@roscommonchildcare.ie.



The National Parents Council Primary has over thirty years' experience working to provide support and represent parents of children in primary schools. We have now broadened our services to support the parents of children who are attending Early Childhood Care and Education services (ECCE). Please click [here](#) for more information and access to resources.

**ELC & SAC support on First 5**

First 5 website has a number of resources and guidance for ELC and SAC services.

First 5 guidance:

This webpage provides guidance for parents and service providers on the reopening, operating and use of early learning and care (ELC) and school-age childcare (SAC) services.

Guidance is based on the latest public health advice available from the Health Protection Surveillance Centre (HPSC) in the HSE, which has been approved by the Expert Advisory Group of the National Public Health Emergency Team (NPHE). The public health advice is subject to ongoing review / updating by the HPSC. If the public health advice changes, the guidance documents on this webpage may change accordingly. Click [here](#) to access guidance.

The following link is for Early practitioners- It provides CPD resources for practitioners/ support organisations & also guidance during Covid 19, Click [here](#) to access information.



Roscommon CCC Weekly Bulletin for ELC and SAC services in County Roscommon**Important information on Emergency Measures 8 - 28 March 2021****Covid-19 Operating Support Payment (COSP)**

This scheme has been extended to cover period 8th March to 28th March. All services eligible for COSP will be required to accept the terms and conditions of funding. To see full announcement please click [here](#)

Clarification on resumption of ECCE from 08 March 2021

DCEDIY have provided the following clarification with regard to the resumption of ECCE from 08 March, (Question 22 of the [March FAQs](#)).

Children eligible to return on 08 March.

- All children within the eligible age range and currently registered on the ECCE programme on the Early Years Hive
- Children within the eligible age range, availing of ECCE provision but are funded through CCSP/TEC.

This is in addition to children considered vulnerable or children of essential workers who continue to be eligible to avail any service during this period.

Children not eligible to return until 29 March.

- Children who are not children of essential workers, are not considered vulnerable or, are not ECCE-eligible (based on age) and availing of ECCE provision within a service.

For clarity, children who are ECCE eligible (based on age) and are availing of ECCE provision can also avail of non-ECCE hours during the same period. For example, if a child resumes on March 8th and requires full-time provision they can attend for the three hour ECCE provision and remain within the service for remainder of the day.

Launch of COVID-19 Impact support - Monday 1st March.

Please click the [link](#) announcing the launch of the COVID-19 Impact support, a strand of sustainability funding for which applications will be open ed on Monday 1st March. Information about eligibility criteria and how to apply are contained within.

**FAQs relating to the gradual lifting of restrictions for ELC and SAC.**

The new [FAQ document](#) covering the period March 8th to March 29th. These FAQs reflect the announcement made by the Minister with regard to the gradual lifting of restrictions on delivery of early learning and childcare services from 8th March.

CCSP/TEC saver management window will remain open for any changes to existing registrations.

**Compliance Guides for Service Providers**

[Click here for more information and to download the guides.](#)



Roscommon CCC Weekly Bulletin for ELC and SAC services in County Roscommon



If you have AIM staff employed in your service who are reaching out to the children they would normally be working with, there are resources on the AIM website [here](#) and the National Council for Special Education website [here](#) that they may find useful.



Tionscadal Léirithe um Theirge ar Scoil agus Tacaíocht na Lúthbhánaita
Demonstration Project on In-school and Early Years Therapy Support



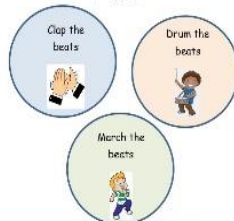
Have Fun with Nursery Rhymes!

Your child may have some favourite nursery rhymes. Have fun with them by trying some of the following ideas:

Use Silly Voices

Say it like a robot	Whisper it
Say it slow	Shout it
Say it like a pirate	Say it like a monster
Say it fast	Say it like a ghost

Try Tapping the 'Beats'



You can find many examples of nursery rhymes on:
<http://www.earlychildhoodireland.ie/work/information-parents/resources-parents/nursery-rhymes/>
You can find examples of nursery rhymes and more tips to support children learn to talk by rhyming.

Have fun with Nursery Rhymes.

Help children needing additional support have fun with Nursery Rhymes check out the Pre-school at Home Hub tip sheet here:

[with-nursery-rhymes.pdf](#)
(first5.gov.ie)

fun-

NCS updates



Covid-19 guidance posters are now available under the 'Covid-19 Funding Measures and Support' heading on [Useful Links](#). These can be printed and displayed in your service or shared via email.

There are 4 posters with advice for

- ELC and SAC services
- ELC and SAC services providing transportation to and from schools.
- Childmind settings.
- Parent



An Roinn Leanaí, Comhionannais,
Míchumais, Lánpháirtíochta agus Oige
Department of Children, Equality,
Disability, Integration and Youth



Roscommon CCC Weekly Bulletin for ELC and SAC services in County Roscommon

The Better Start Quality Development Service is continuing to accept requests for their Quality Development Service. Please e mail quality@betterstart.ie

They are also providing shorter-term support to settings with practice-related queries so if services are not interested in the longer-term mentoring support, this may be an option for them. All they have to do is send an email outlining their query to quality@betterstart.ie putting their DCYA number and setting name in the subject line and an Early Years Specialist will contact them to discuss it further. Below is link to the information Better Start Facebook page
<https://m.facebook.com/BetterStartIreland/photos/pb.315121062029998.-2207520000..1631185920423499/?type=3>

Barnardos Parent Supportline**1800 910 123**

10am - 2pm, Monday - Friday

Supporting children facing adversity

Barnardo's have produced a document to support practitioners who may be working with or supporting children facing adversity. Covid 19 is a new adverse event in the lives of children. For some, any adversity is new to them, for others it is yet another adverse factor in their lives. The document aims to help you understand how adversity might impact on their lives and how you might be able to support them.

The document can be found [here](#)

Barnardo's offer a range of online e learning courses to participants from a wide range of organisations across the community, voluntary, statutory, public, and private sector.

To view a list of their upcoming courses please click on [here](#)

Tusla Portal
Complete your 2019
Early Years Re-registration



Childcare providers please check your Tusla portal to ensure you have submitted all your documentation for re-registration.

Roscommon CCC Weekly Bulletin for ELC and SAC services in County Roscommon



Meitheal

TUSLA -led Early Intervention Practice Model

Meitheal is the Early Intervention Model Practice Model used in conjunction with parents to help them share their knowledge, expertise and concerns about their child and to hear the views of Practitioners working with them. The ultimate goal is to enable parents and practitioners to work together to achieve a better life for their child.

Dates available are:
Monday 12th, 19th & 26th April
2pm to 2.45pm MyTeams
RSVP essential to book a Place and receive training link
denise.swanick@tusla.ie

Child & Family Support Network Roscommon are hosting an Introduction to Meitheal for Early Educators linked with Roscommon Child Care Committee

We will show a ten-minute video and have Q&A session to explore where Meitheal fits with your professional practice.

This video is a comprehensive introduction to the key features of Meitheal. The aim of the briefing is to introduce:

- Meitheal and its defining features
- Considering the Meitheal process whilst working with a family
- The benefits of Meitheal for children, young people, families and practitioners






Minding ourselves

The HSE have produced a booklet 'Keeping well this winter' which you can use to help you plan a little self-care. It can also be found [here](#)

Useful Links

Tusla's Early Years Inspectorate has developed guidance for registered providers of early year's services to support and facilitate the safe reopening and operation during the COVID-19 period.

Click [here](#) for further information!

- Tusla, Early Years Notification Form – Covid-19. Click [here](#) to access form.
- Tusla Guidance for Early Years Services – Covid-19, Click [here](#) to access guidance
- Tusla, Early Years Self-Assessment Checklist – Covid-19, Click [here](#) to access Checklist

The Rufus handwashing campaign [Click here for more information](#)



Essential workers

There is still some confusion around what constitutes an 'essential worker'. Whilst services have been asked to prioritise frontline health care staff where they have a limited number of places, if you have the capacity, you can take the children of any family who are essential workers as defined on this list: <https://www.gov.ie/en/publication/c9158-essential-services/>

Roscommon CCC Weekly Bulletin for ELC and SAC services in County Roscommon

HSE public health advice

Dr. Abigail Collins, Consultant in Public Health Medicine, has uploaded two short videos providing advice regarding the safety of ELC and SAC settings for Essential Workers during the current level 5 restrictions.

<https://youtu.be/2lpTGuevCMU>

<https://youtu.be/ik9ALX-qJUg>

Happy International Women's Day

