

17 th August 2020

Roscommon CCC Weekly Newsletter for childcare services in
County Roscommon



Roscommon County Childcare Committee CLG



In this Issue

Roscommon CCC updates
DCYA News
Pobal updates
Ask the Team
Always Children First updates



An Roinn Leanaí
agus Gnóthaí Óige
Department of Children
and Youth Affairs



In this week's bulletin you will find the most recent announcements from DCYA and the PIP Portal.

Please note the information in these bulletins is based on official communications from DCYA and Pobal as well as notices on PIP. However, information is subject to change from week to week so please check our most recent bulletin for the most up to date information. Don't forget this bulletin should not replace checking PIP - it is merely a reminder of important deadlines and information.

Important Deadlines

Friday 28 August 2020 Covid-19 Capital grant applications close

Friday 28 August 2020 Reopening support applications close

NCS Contracting 2020/2021: Important dates

Following on from the previous Programme Contracting and Programme Readiness announcements, we would like to bring your attention to the below points based on the clarification* to the 2019/20 Contract:

For services who re-contract to NCS 2020/21 on/before 31st August 2020, there will be no break to payments based on valid registrations/claims. These services will continue to be paid for the 2020/21 programme call until the 22nd August 2021. For further information please click [here](#)

AIM Level 1 applications

The application process for AIM Level 1 (Inclusion Co-ordinator Higher Capitation) has been postponed until Monday 17th August 2020. Applications for the forthcoming pre-school year will be available on the HIVE system; please do not submit an application on PIP.

AIM Level 1 application process will also be available on the hive Monday 17th August 2020

Service Provider Training Date** Thursday 20th August 2020
Roscommon Service Provider training on ECCE registrations, Aim Level 1 registration and Higher Capitation registration is Thursday 20th August 2020 from 2:15pm to 3:30pm. A webinar link will be emailed to all Service Providers in Roscommon the day before the webinar is scheduled. If you are unable to attend, a recorded version will be made available after the date.

. COVID-19 Sustainability Support Funding

On 25 July the Minister announced the Department's July Jobs Stimulus Funding Package for the Early Learning and Care (ELC) and School-Age Childcare (SAC) sector.

The funding package for the Early Learning and Care (ELC) and School Age Childcare (SAC) sector from 24 August to end 2020 includes:

Continuation of all DCYA ELC and SAC subsidy schemes (NCS, CCSP, TEC) and resumption of the ECCE Programme at existing capitation and subsidy rates, including ECCE Higher Capitation; Access to the Revenue-operated EWSS. Click [Here](#) for further information

Health Protection Surveillance Centre (HPSC) updated guidance

Following the webinar last week from the HPSC, the guidance for childcare services has been updated. We have attached a copy for your convenience. It can also be found on the First 5 website. We would urge you to pay particular attention to the coloured box at the top of the document as it sets out very clearly the changes, additions and updates that have been made. Click [here](#) for guidance



PIP Updates

ECCE September Readiness 2020/2021 on the Early Years Hive

Please see the key information and dates for registrations and payments for ECCE on the Early Years Hive over the coming weeks. Before registrations can commence:

Service calendars and fees lists must be submitted before registrations can be approved

Services must have signed the ECCE Funding Agreement 2020-2021

Quick guides are available on the ECCE Resources section of the Useful Links page on the Early Years Hive on creating a service calendar and fees list for ECCE. Click [here](#) for further information

CCSP/TEC Savers Fee Lists and Calendars

These programmes will continue to be hosted on PIP. The contracts are available on PIP from 31st July.

[Click here for more information.](#)

CCSP April 2020 returns are due to be completed. [Click here for more information](#)



A Whole-of-Government Strategy
Babies, Young Children and their

Parents support on First 5

The Let's get Ready website has lots of resources for parents preparing their children to return to preschool/school. click [here](#) for further information

Supporting your child's transition to primary school: click [here](#) for further information

Teaching new skills to children: Click [here](#) for further information



Ask The Team

Q. Is there a COVID-19 Setting Reopening Health and Safety Checklist

A. Yes , This checklist is available on the First 5 website.

To access this checklist please click [here](#)



Ask The Team

Q. If my service is late registering a child on the National Childcare Scheme (NCS) Will the claim be backdated for that child.

A. No . There is no backdating of claims for NCS. Providers will not be paid for weeks where attendance was not registered. CHICKs need to be fully registered on Hive on the week children start attending in order to receive payments.

CHICKS are for NCS only

Just to remind you parents currently only have to apply for a chick if they are accessing a place under the National Childcare Scheme, NCS. The registration process for ECCE children through the Hive without a chick



Always Children First



The National Early Years Children First Committee have developed an information leaflet for parents.

The purpose of the leaflet is to outline what parents can expect in relation to Child Safeguarding from Early Learning and Care services. [Click here to view.](#)

Child Safeguarding Statement Template and Information sheet



The National Early Years Children First Programme, in conjunction with Tusla, have updated the Early Learning and Care, Child Safeguarding Statement Template and Information Sheet.

Early Learning and Care services are encouraged to read the information sheet prior to updating their Child Safeguarding Statement.

The Template has been updated in line with all relevant Legislation and Policy and has been approved, as a template, by the Child Safeguarding Statement Compliance Unit (CSSCU).

It is imperative that services follow all instructions on the Template and that they ensure that the risks that are identified and the policies that are named to mitigate risks are specific to their service.

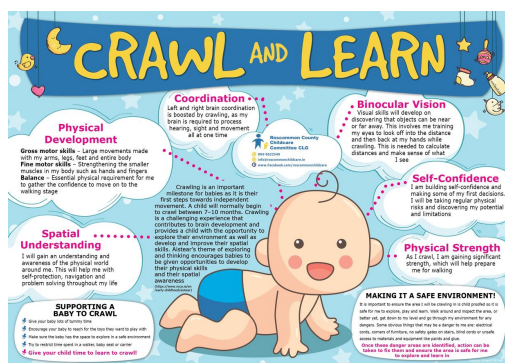
This Template has been taken and updated from the publication 'Developing a Child Safeguarding Statement; A Guide for Early Years Services in Ireland'. This document is also currently under review and we hope to publish the updated version in the coming months.

As always ELC services can refer to the relevant Tusla publications for support which can be found [here](#)

Roscommon CCC Resources

Roscommon CCC has uploaded a variety of useful resources for services and parents. on our resource page on our website. Recent resources include:

- Roscommon CCC Crawl and Learn poster. Click on the poster to download for free. This would be a good resource to parents and service providers
- Roscommon CCC policies and procedures guidelines and many others.
- Think abouts on re-opening your Early Learning and Care and School Aged Childcare Service Support from Roscommon County Childcare Committee CLG



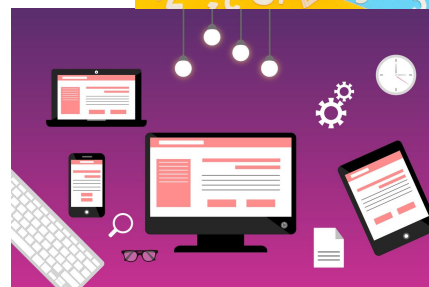
Additional Resources

Mo Scéal - Transitions to primary school

First Five Guidance for re-opening

National Aistear Siolta Practice Guide - Transitions

Aoife and Daithi go to Playpod preschool





Contacting Roscommon CCC

Just a reminder that we are all taking phone calls – the main landline number rings through to our mobile phones. If your call isn't answered, it may be because we are having a short meeting. Please leave a voicemail and we will get back to you.

Our contact details are still 0949622540.

Dial 1 for Martina Towey, Administrator.

Dial 2 for Carmel Dunne, Childcare Development Officer.

Dial 3 for Sinead McQuaid, Childcare Development Officer.

Dial 4 for Áine Mannion, Childcare Development Officer.

Dial 5 for Irene Cafferky, Roscommon CCC Manager/Co-ordinator.

Alternatively you can email a staff member on the following email addresses:

Martina Towey admin@roscommonchildcare.ie

Carmel Dunne carmel.dunne@roscommonchildcare.ie

Sinead McQuaid cdo4@roscommonchildcare.ie

Áine Mannion cdo5@roscommonchildcare.ie

Irene Cafferky irene.cafferky@roscommonchildcare.ie

Keep updated with news and important updates via [Roscommon CCC website](#)



[Roscommon CCC website](#)

[Roscommon CCC Facebook](#)

[Roscommon CCC Instagram](#)

[Roscommon CCC twitter](#)

STAY SAFE