

17th July 2020

Roscommon CCC Weekly Newsletter for childcare services in
County Roscommon



Roscommon County Childcare Committee CLG



In this Issue

Roscommon CCC updates
Ask the Team
DCYA News
Pobal updates
Always Children First updates

In this week's bulletin you will find the most recent announcements from DCYA and the PIP Portal. **Please note the information in these bulletins is based on official communications from DCYA and Pobal as well as notices on PIP. However, information is subject to change from week to week so please check our most recent bulletin for the most up to date information. Don't forget this bulletin should not replace checking PIP - it is merely a reminder of important deadlines and information.**

Contacting Roscommon CCC

Just a reminder that we are all taking phone calls – the main landline number rings through to our mobile phones. If your call isn't answered, it may be because we are having a short meeting. Please leave a voicemail and we will get back to you.

Our contact details are still 0949622540.

Dial 1 for Martina Towey, Administrator.

Dial 2 for Carmel Dunne, Childcare Development Officer.

Dial 3 for Sinead McQuaid, Childcare Development Officer.

Dial 4 for Áine Mannion, Childcare Development Officer.

Dial 5 for Irene Cafferky, Roscommon CCC Manager/Co-ordinator.

Alternatively you can email a staff member on the following email addresses:

Martina Towey admin@roscommonchildcare.ie

Carmel Dunne carmel.dunne@roscommonchildcare.ie

Sinead McQuaid cdo4@roscommonchildcare.ie

Áine Mannion cdo5@roscommonchildcare.ie

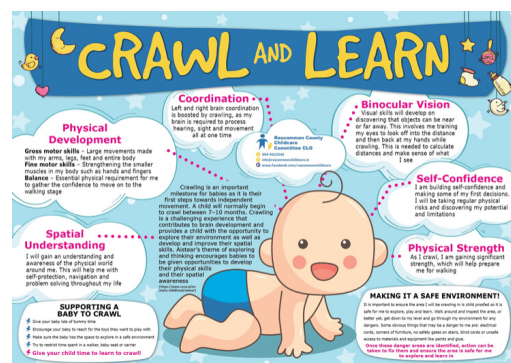
Irene Cafferky irene.cafferky@roscommonchildcare.ie



Roscommon CCC Resources

Roscommon CCC has uploaded a variety of useful resources for services and parents. on our resource page on [our website](#). Recent resources include:

- Roscommon CCC Crawl and Learn poster. Click on the poster to download for free. This would be a good resource to parents and service providers
- Roscommon CCC [policies and procedures guidelines](#) and many others.
- [Think abouts on re-opening your Early Learning and Care and School Aged Childcare Service Support from Roscommon County Childcare Committee CLG](#)



Always Children First

The National Early Years Children First Committee have developed an information leaflet for parents.

The purpose of the leaflet is to outline what parents can expect in relation to Child Safeguarding from Early Learning and Care services. [Click here to view.](#)



Ask the team

Q. When does the First Aid Responder course close?

A. The next phase (Quarter 3) of First Aid Responder (FAR) training reimbursements closes on 18th September 2020.



Ask the team

Q. Our staff member has handed in their notice and advised they will not be returning – What do we do about the WSCS and removing the staff from it?

A. The DCYA and Revenue have noted that the WSS/WSCS represent a method of paying staff wages and so does not change the conditions of contracts. Therefore, the notice period should run as normal up to the final day and on that day the staff member should be removed from the WSS/WSCS.

DCYA updates

Minister O’Gorman announces the publication of a ‘Focused Policy Assessment’ of the ECCE Higher Capitation Payment

DCYA Press Release: Minister O’Gorman meets with Early Years sector representatives

The Department of Children and Youth Affairs has launched a range of online resources and guidance to support service providers, practitioners and parents to prepare for the reopening of Early Learning and Care and School-Age Childcare settings, including childminders. [The Guidance for Reopening webpage is available on the First 5 website.](#)

Please click on the links below for access to additional resources to support your service:
[First Five Continuing professional development resources for practitioners.](#)

Urgent need for services to complete a Summer Reopening Capacity Survey

[Click here for more information](#)

Early Years Providers Centre - Announcement

[Click here for more information.](#)



New Applications Closed for Higher Capitation

New applications for Higher Capitation on the ECCE 2019/20 Programme Call are now closed for submission effective from 26/06/2020 in line with the ECCE Programme Year. No new applications submitted after this date will be processed. [Click here for more information.](#)

Reminder: Universal Practice Advice to support ELC/SAC services re-open

Better Start Quality Development Early Years Specialists are available to provide email and phone support to providers on reopening. [Click here for more information.](#)



• CHILDMINDERS IN COUNTY ROSCOMMON •

***Did you know that you could apply for
2 childminding grants?***

• TO FIND OUT MORE ABOUT THE CHILDMINDING DEVELOPMENT
GRANT AND THE CHILDMINDING REOPENING GRANT PLEASE
CONTACT ÁINE ON 094 96 22540 •

Keep updated with news and important updates via [Roscommon CCC website](#)

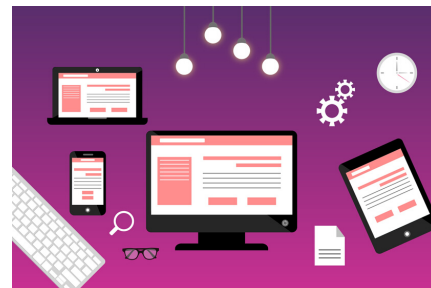


Additional Resources

[Mo Scéal - Transitions to primary school](#)

[First Five Guidance for re-opening](#)

[National Aistear Siolta Practice Guide - Transitions](#)



[Aoife and Daithi go to Playpod preschool](#)



Roscommon CCC are compiling a half year newsletter and would like ELC/SAC services from County Roscommon to share their 2020 experiences. While 2020 was an unprecedented series of events, Roscommon CCC would like to showcase how ELC/SAC services overcame and adapted to the obstacles and challenges of 2020. If you would like to find out more information about Roscommon CCC's Half yearly newsletter please contact Áine on 094 96 22540.



[Roscommon CCC website](#)

[Roscommon CCC Facebook](#)

[Roscommon CCC Instagram](#)

[Roscommon CCC twitter](#)

STAY SAFE